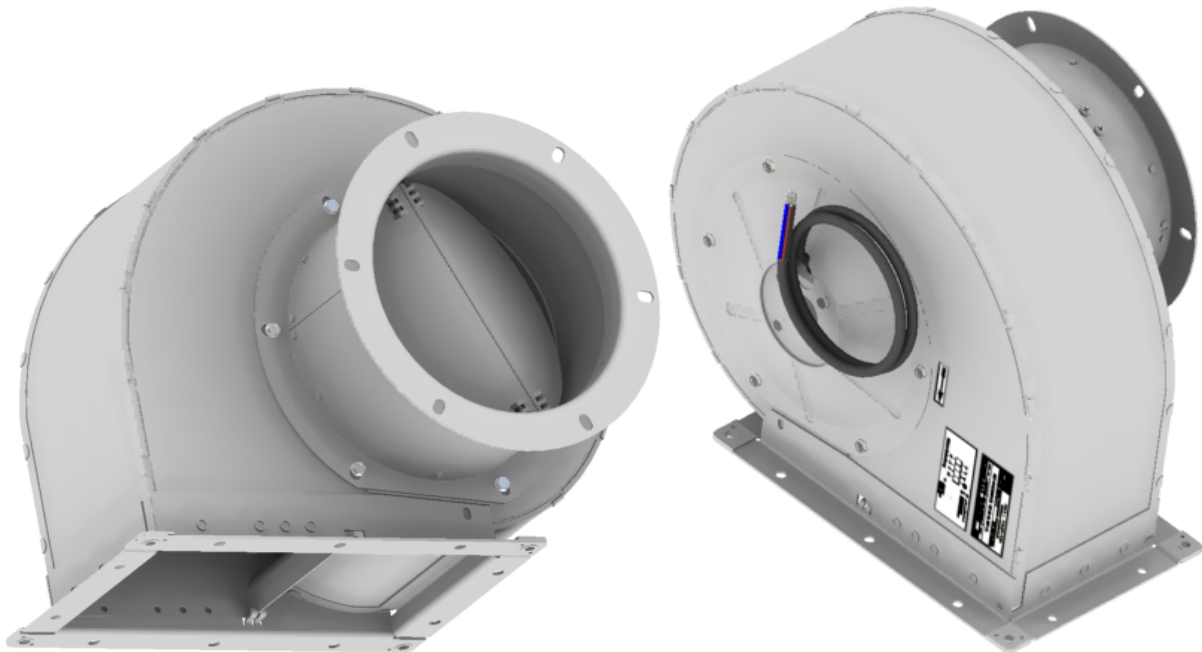


RADIAL BLOWER

single inlet



RC-G4D 200 CL 12-15 m.VS.UL



Gottlieb-Dunkel-Str.20/21
D-12099 Berlin-Tempelhof

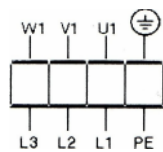
Product: Radial blower, single inlet
 Model with flap valve on inlet side
 RC-G4D 200-CD 04-14 m.VS.UL
 RC-G4D200-CD04-14 m.VS.ST.UL

Item-No.: RC-223 724 in RAL 7032
 RC-362 527 in RAL 7035
 RC-372 548 in RAL 7035 with connector

**Technical data/
 Description:**

Nominal voltage	3~400 V (Y)
Frequency	50/60 Hz
Power consumption	360/340 W
Current consumption	0.66/0.62 A
Pressure over volume flow	see performance curve
Rated speed	1300/1550 min ⁻¹
Motor protection type	IP44
Insulation class	F
Motor protection	without thermal contacts
Motor designation	M4D 074 - EI
Operating temperature	-25...+60 °C
Weight	8.2 kg
Expected service life	>40,000 hours of operation, at 60 °C ambient temperature
Connection cable	1 m long
Certification	UL
Motor construction type	three-phase current external rotor motor
Spiral casing	galvanized sheet steel, colour-coated
Impeller wheel	galvanized sheet steel, colour-coated black
Direction of rotation	counter-clockwise (viewed from rotor)
Direction of movement	inlet on rotor side
Mounting position	rotor axis vertical (air intake from the bottom)

Connection diagram:



- U1 = black
- V1 = blue
- W1 = brown
- ⊕ = green / yellow

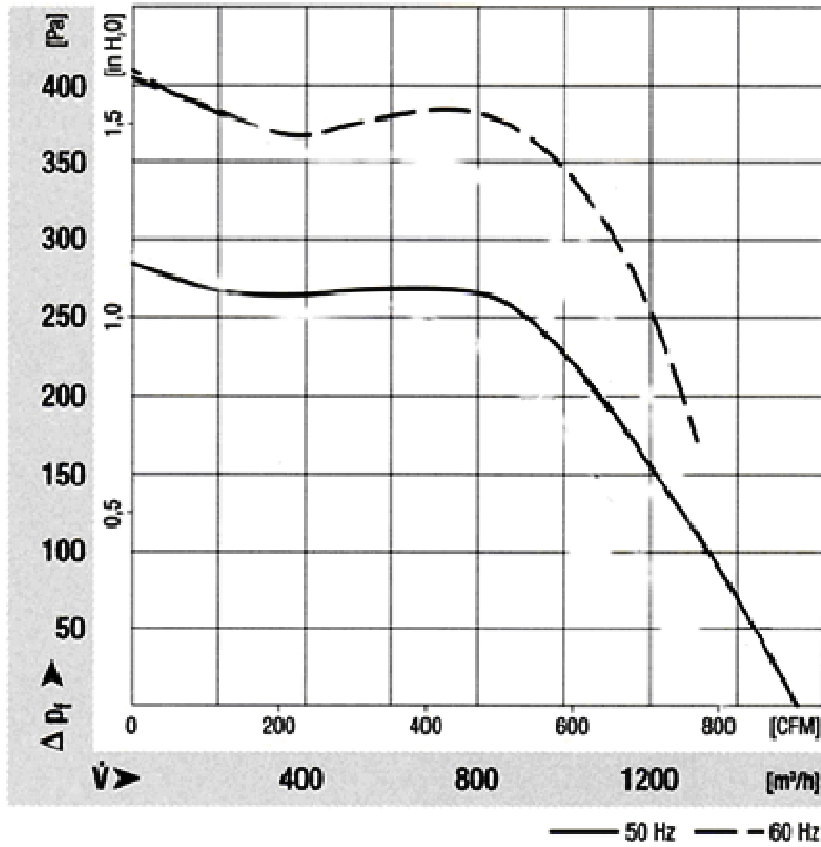
Y-connection 3~400 V AC
 Wired star point within

if wired up on 15-pole connector



- 1 U1 black
- 2; 3 free
- 4 V1 blue
- 5; 6 free
- 7 W1 brown
- 8; 9; 12 free
- 10; 11 free
- 13; 14 free
- 15 PE yellow/green

Pressure over volume flow: at 50/60 Hz



Operating altitude with position above sea level

Compression reduction per 100 m x 0.01

E.g. compression according to performance curve 400 Pa ± 0 above sea level = 320 Pa 2000 m above sea level

